

RELATED STANDARDS

FAA AC 150/5345-46 L-852T
ICAO Annex 14 Vol.I Para. 5.3.18
IEC TS 61827
STANAG 3316

APPLICATIONS

- As medium intensity taxiway edge light
- As omni-directional heliport perimeter light (FATO & TLOF)

IMPORTANT FEATURES

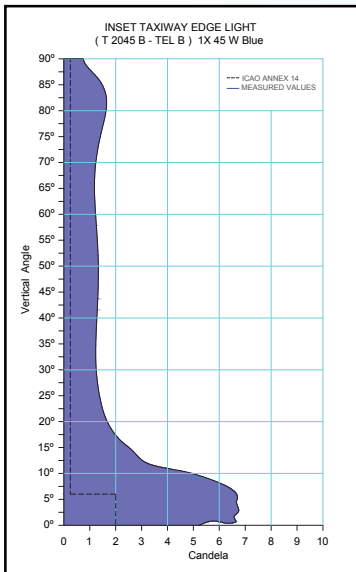
- **IEC TS 61827 certified**
- **Available with halogen lamp or LED module**
- Simple installation, uninstallation
- Needs very little maintenance thanks to simple construction and minimum number of parts
- Re-lamping is fast and easy without any tools
- Long lamp life 1500 hours at full intensity (6.6 A) increases to 2000-4000 hours in practice as the light usually operates at lower intensities. LED fixture has an average life of 50000 hours at high intensity.
- Accumulation of water in front of the lens does not effect photometric performance
- The light has a 12,5 mm height from ground level

ELECTRICAL SUPPLY

Through,

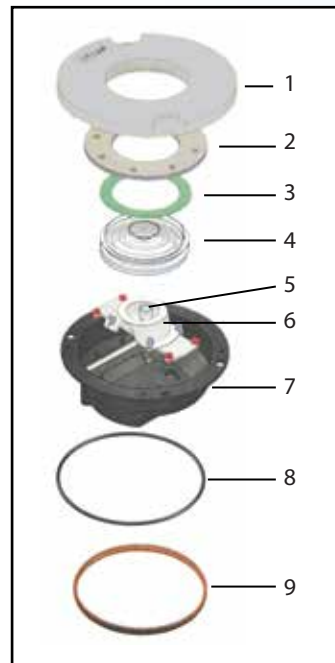
- 45 W isolating transformer for halogen lamp
- 20/25 W isolating transformer for LED

PHOTOMETRIC PERFORMANCE



MATERIALS & FINISH

Chromate treatment and electrostatic powder coating.
The color is aviation grey and hardware is made of stainless steel



CONSTRUCTION

1. Top cover
2. Prism holder
3. Prism gasket
4. Prism
5. 45W quartz halogen prefocused PK30d lamp
6. Anodized aluminium reflector
7. Bottom cover
8. O-ring gasket
9. Gasket

WEIGHT

With the inner lenses, Net weight is 3,2 kg.

PACKING INFO

In cardboard boxes of 21 x21 x 18,7 cm.